



# **NETKEY**® **NETWORK COMPONENTS**

**TELECOMMUNICATIONS  
ROOM TO WORK AREA**

NETKEY® Network Components provide a complete, standards compliant cabling infrastructure solution for voice, data, and video applications. NETKEY® Modules feature the universal “keystone” latch design and are compatible with a wide assortment of faceplates, surface mount boxes, and modular patch panels. When teamed with complementary PANDUIT products, the NETKEY® solution covers all your needs from the telecommunication room to the work area with the proven innovation and quality you depend on from PANDUIT.

## NETKEY® Category 6, 5e, and 3 Jack Modules



NK688M\*



NK688M\*-Q

**NEW Packaging for Cat 5e and 6 Jack Modules!**



NK5E88M\*Y



NK5E88M\*-Q



NK388M\*\*Y



NK366UM\*\*Y



NK366M\*\*Y

Part Number	Description
-------------	-------------

### NETKEY® Category 6 Jack Module

NK688M*	Category 6 RJ45, 8-position, 8-wire punchdown universal keystone jack 8-position module.
NK688M*-Q	NETKEY® Category 6 Punchdown Jack Module Convenience Pack that includes 25 punchdown jack modules in one container.

Note: Category 6 not suitable for use with NKPP48HDY and NKPPA48HDY flush mount modular patch panels.

### NETKEY® Category 5e Jack Module

NK5E88M*Y	Category 5e RJ45, 8-position, 8-wire lead frame universal keystone jack module.
NK5E88M*-Q	NETKEY® Category 5e Jack Module Convenience Pack that includes 25 jack modules in one container.

### NETKEY® Category 3 Jack Modules

NK388M**Y	Category 3 RJ45, 8-position, 8-wire universal keystone jack module.
NK366UM**Y	Category 3, RJ45 opening, 6-position, 6-wire USOC keystone jack module. Works with RJ11 plug.
NK366M**Y	Category 3, RJ45 opening, 6-position, 6-wire keystone jack module. Works with RJ11 plug.

Accepts RJ11 Plug.

\***Category 6 and 5e colors available:** Substitute \* with IW (Off White), EI (Electric Ivory), IG (International Gray), WH (White), BL (Black), OR (Orange), GR (Green), BU (Blue), RD (Red) and YL (Yellow).

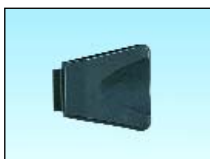
\*\***Category 3 colors available:** Substitute \*\* with IW (Off White), EI (Electric Ivory), IG (International Gray), WH (White) and BL (Black).



NKSPB



PDT110



CJT

### Category 6 Punchdown Base

NKSPB	Used to assist in terminating Category 6 punchdown and A/V punchdown modules.
-------	---

### Punchdown Tool

PDT110	Punchdown tool and blade for 110 style IDC's. Terminates and cuts UTP cable in one operation.
--------	---

### Replacement Blade

PDTH110	Replacement blade for single pair punchdown tool.
---------	---

### Termination Tools for NETKEY® Category 5e and 3 Jack Modules

CJT	Termination tool for Category 5e and Category 3 keystone jack modules.
-----	--

## NETKEY® Audio/Video and Blank Modules



NKF\*\*



NKBNCM\*\*Y



NKRSMB\*\*Y



NKRTMR\*\*



NKSPM\*\*



NKSVC\*\*



NKBPB\*\*Y



NKBPR\*\*Y



NK35MSS\*\*



NK35MSC\*\*



CHD15HDC\*\*Y



CHD15HDSC\*\*Y



NKBM\*\*-X

Part Number	Description
-------------	-------------

### NETKEY® F-Type Module

NKF**	Keystone module with 75 ohm industry standard F-Type coax bulkhead coupler.
-------	---

### NETKEY® 50 Ohm BNC Coax Module

NKBNCM**Y	Keystone module with 50 ohm industry standard coax bulkhead coupler.
-----------	--

### NETKEY® RCA Solder Type Modules

NKRSMB**Y	Keystone module supplied with one RCA solder type connector with black insert.
NKRSMR**Y	Keystone module supplied with one RCA solder type connector with red insert.
NKRSMY**Y	Keystone module supplied with one RCA solder type connector with yellow insert.
NKRSMW**Y	Keystone module supplied with one RCA solder type connector with white insert.

### NETKEY® RCA Pass-Through Modules

NKRTMR**	Keystone module supplied with one RCA coupler with red insert.
NKRTMY**	Keystone module supplied with one RCA coupler with yellow insert.
NKRTMW**	Keystone module supplied with one RCA coupler with white insert.

### NETKEY® S-Video Modules

NKSPM**	Keystone module with 110 style punchdown to SVHS connector.
NKSVC**	Keystone module supplied with one S-Video pass-through coupler.

### NETKEY® 5-Way Binding Post Modules

NKBPB**Y	Keystone module supplied with 5-way binding post with black stripe. Termination ends can include banana plugs or standard speaker wire AWG #10 or thinner.
NKBPR**Y	Keystone module supplied with 5-way binding post with red stripe. Termination ends can include banana plugs or standard speaker wire AWG #10 or thinner.

Note: IG (International Gray) and BL (Black) colors not available for these binding post modules.

### NETKEY® 3.5mm Stereo Connectors

NK35MSS**	Keystone module supplied with one 3.5mm (1/8") stereo headset solder-type connector.
NK35MSC**	Keystone module supplied with one 3.5mm (1/8") stereo headset coupler.

### D-Subminiature Inserts

CHD9C**Y	1/3 insert with 9-pin female to female coupler.
CHD15HDC**Y	1/3 insert with 15-pin female to female coupler. SVGA capable.
CHD15HDSC**Y	1/3 insert with 15-pin HD screw down DB connector mount to a printed circuit board; terminates on site. SVGA capable.

### NETKEY® Blank Module

NKBM**-X	Blank keystone module to reserve space for future use.
----------	--

\*\*For additional colors, substitute \*\* with IW (Off White), EI (Electric Ivory), WH (White), IG (International Gray) or BL (Black).

## NETKEY® Communication Faceplates



CHB2M\*\*-X



NKHF2M\*\*-X



NKHS2\*\*-X



NKHS2S\*\*-X



CB\*\*



CBE\*\*Y



NK1F\*\*Y



NK2F\*\*Y



NK4F\*\*Y



NK1FN\*\*



NK2FN\*\*



NK4FN\*\*



NK2HSF\*\*Y



NK4HSF\*\*Y



NKF2S



NKF4S



NKF6S



NK4106MF\*\*



NK4RMF\*\*



NK4MF\*\*

Part Number	Description
<b>Blank and Empty Inserts</b>	
CHB2M**-X	1/3 blank insert. Reserves space for future upgrades.
NKHF2M**-X	2-module space, 1/3 size, flat insert accepts two NETKEY® Modules.
NKHS2**-X	2-module space, 1/2 size, sloped insert accepts two NETKEY® Modules.
NKHS2S**-X	2-module space, 1/2 size sloped, shuttered insert accepts two NETKEY® Modules.

### Classic Series Faceplate Frames

CB**	Single gang faceplate frame accepts two 1/2 size module inserts or three 1/3 size module inserts.
CB**-2G	Double gang faceplate frame accepts four 1/2 size module inserts or six 1/3 size module inserts.

### Executive Series Faceplate Frames

CBE**Y	Single gang faceplate frame accepts two 1/2 size module inserts or three 1/3 size module inserts. Supplied with labels and label cover/screw covers.
CBE**-2GY	Double gang faceplate frame accepts four 1/2 size module inserts or six 1/3 size module inserts. Supplied with labels and label cover/screw covers.

### NETKEY® Flush Mount Screw-On Communication Faceplates with Labeling

NK1F**Y	1-position single gang faceplate.
NK2F**Y	2-position single gang faceplate.
NK4F**Y	4-position single gang faceplate.
NK6F**Y	6-position single gang faceplate.
NK12F**Y	12-position double gang faceplate.
CSC**-X	Color-matched faceplate screw cover (ten per pkg.).

### NETKEY® Flush Mount Screw-On Communication Faceplates

NK1FN**	1-position single gang faceplate.
NK2FN**	2-position single gang faceplate.
NK3FN**	3-position single gang faceplate.
NK4FN**	4-position single gang faceplate.

**NEW!**

### NETKEY® Horizontal Communication Faceplates with Labeling

NK2HSF**Y	2-position horizontal sloped faceplate.
NK4HSF**Y	4-position horizontal sloped faceplate.

### NETKEY® Stainless Steel Faceplates with Labeling

NKF2S	2-position single gang faceplate.
NKF4S	4-position single gang faceplate.
NKF6S	6-position single gang faceplate.

### NETKEY® Module Frames and Modular Furniture Faceplate

NK2106MF**	2-position screw mount "106" duplex module frame.
NK4106MF**	4-position screw mount "106" duplex module frame.
NK4RMF**	4-position screw mount rectangular module frame.
NK4MF**	4-position snap-on modular furniture faceplate.

\*\*For additional colors, substitute \*\* with IW (Off White), EI (Electric Ivory), WH (White), or BL (Black).

## NETKEY® Surface Mount Boxes



NK2BX\*\*-A      NK4BX\*\*-AY      NK6BX\*\*-AY

Compatible with PANDUIT LD3, LD5, and LD10 Raceway.

Part Number	Description
NK2BX**-A	2-position surface mount box – adhesive.
NK4BX**-AY	4-position surface mount box – adhesive.
NK6BX**-AY	6-position surface mount box – adhesive.
CBM-X	Surface mount box mounting magnet – optional (ten per pkg.).

\*\*For additional colors, substitute \*\* with IW (Off White), EI (Electric Ivory), WH (White), or IG (International Gray). Surface mount boxes include mounting screws and adhesive tape.

## NETKEY® Patch Panels



NK6PPG12WY



NK6PPG24Y



NK6PPG48Y



NK5EPPG12WY



NK5EPPG24Y



NK5EPPG48Y



NKMP24Y



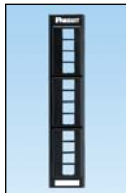
NKMP48Y



NKFP24Y



NKFP48Y



NKFP12W



NKPP24FMY



NKPP48FMY



NKPP48HDY



WB89D

Part Number	Description
-------------	-------------

### NETKEY® Category 6 Punchdown Patch Panels

NK6PPG12WY	12-port, 8-position, 8-wire, 110 style punchdown patch panel. Mounts to 89D bracket. Color coded for T568-A and T568-B wiring schemes.
NK6PPG24Y	24-port rack mount punchdown patch panel – 1 RU.
NK6PPG48Y	48-port rack mount punchdown patch panel – 2 RU.

### NETKEY® Category 5e Punchdown Patch Panels

NK5EPPG12WY	12-port, 8-position, 8-wire, 110 style punchdown patch panel. Mounts to 89D bracket. Color coded for T568-A and T568-B wiring schemes.
NK5EPPG24Y	24-port rack mount punchdown patch panel – 1 RU.
NK5EPPG48Y	48-port rack mount punchdown patch panel – 2 RU.

For Punchdown Tool and Replacement Blade, see page 2.

### NETKEY® All Metal Modular Patch Panels

NKMP24Y	24-port patch panel – 1 RU.
NKMP48Y	48-port patch panel – 2 RU.

### NETKEY® Modular Faceplate Patch Panels

NKFP24Y	24-port modular faceplate patch panel – 1 RU.
NKFP48Y	48-port modular faceplate patch panel – 2 RU.
NKFP12W	12-port modular faceplate patch panel (89D wall mount).
NKFP24KSRBSY	24-port faceplate patch panel and strain relief bar – 1 RU.
NKFP48KSRBSY	48-port faceplates patch panel and strain relief bar – 2 RU.

### NETKEY® Flush Mount Modular Patch Panels

NKPP24FMY	24-port flush mount modular patch panel – 1 RU.
NKPP48FMY	48-port flush mount modular patch panel – 2 RU.

### NETKEY® High Density Flush Mount Patch Panels

NKPP48HDY	48-port high density flush mount patch panel – 1 RU.
-----------	--

### Wall Mount Bracket

WB89D	89D wall mount bracket.
-------	-------------------------

## NETKEY® Angled Modular Patch Panels

**PATENTED**



NKPPA24FMY



NKPPA48FMY



NKPPA48HDY

Part Number	Description
-------------	-------------

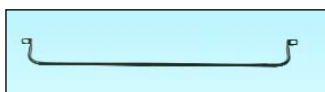
### NETKEY® Flush Mount Modular Patch Panels

NKPPA24FMY	Angled 24-port flush mount modular patch panel – 1 RU.
NKPPA48FMY	Angled 48-port flush mount modular patch panel – 2 RU.

### NETKEY® High Density Flush Mount Modular Patch Panels

NKPPA48HDY	Angled 48-port high density flush mount modular patch panel – 1 RU.
------------	---

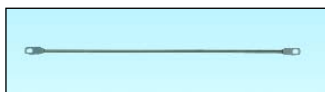
## Patch Panel Accessories



SRB19BLY



SRBM19BLY



SRBS19BL-XY



DPFP1



DPFP2



CPAF1BLY



CPAF2BLY

Part Number	Description
-------------	-------------

### Strain Relief Bars

SRB19BLY	Cable strain relief bar extends 2" off of a 19" rack to support cables in punchdown or modular patch panel applications.
SRBM19BLY	Cable strain relief bar manager attaches to 19" rack to support cables in punchdown or modular patch panel applications.
SRBS19BL-XY	Cable strain relief bar supports cables in punchdown or modular patch panel applications.

### Flat Filler Panels

DPFP1	Covers one open rack space in standard EIA 19" rack.
DPFP2	Covers two open rack spaces in standard EIA 19" rack.

### Angled Filler Panels

CPAF1BLY	Covers one open rack space in standard EIA 19" rack.
CPAF2BLY	Covers two open rack spaces in standard EIA 19" rack.

## NETKEY® Copper Patch Cords



NK6PC\*\*Y



NK5EPC\*\*Y

Part Number	Description
-------------	-------------

### NETKEY® Category 6 Patch Cords

NK6PC3**Y	3' Category 6 patch cord.
NK6PC5**Y	5' Category 6 patch cord.
NK6PC7**Y	7' Category 6 patch cord.
NK6PC10**Y	10' Category 6 patch cord.
NK6PC14**Y	14' Category 6 patch cord.
NK6PC20**Y	20' Category 6 patch cord.

### NETKEY® Category 5e Patch Cords

NK5EPC3**Y	3' Category 5e patch cord.
NK5EPC5**Y	5' Category 5e patch cord.
NK5EPC7**Y	7' Category 5e patch cord.
NK5EPC10**Y	10' Category 5e patch cord.
NK5EPC14**Y	14' Category 5e patch cord.
NK5EPC20**Y	20' Category 5e patch cord.

\*\*For additional colors, substitute \*\* with GR (Green), YL (Yellow), RD (Red) or BU (Blue). For IW (Off White), remove \*\* from part number.

## Category 5e Punchdown Blocks



P110KB1004Y



P110KB3004Y



P110KB100R2Y



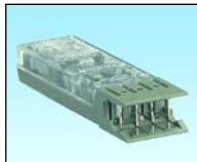
P110KB100R4WJY



P110CB4-XY



P110PC1-XY



P110PC2-XY



P110PC4-XY



P110B1004R2Y



P110B1004R4WJY



P110JTW-X  
P110JT-X



P110LH

Part Number	Description
-------------	-------------

### PAN-PUNCH® 100 Category 5e System Termination Kits

P110KB1004Y	Field terminated. Includes a base, 4-pair connector kit with five 4-pair connectors and one 5-pair connector per row of 25 pairs, two label holders, and two white designation labels.
P110KB1005Y	Field terminated. Includes a base, 5-pair connector kit with five 5-pair connectors and one 5-pair connector per row of 25 pairs, two label holders, and two white designation labels.
P110KB3004Y	Field terminated. Includes a base, 4-pair connector kit with five 4-pair connectors and one 5-pair connector per row of 25 pairs, two label holders, and two white designation labels.
P110KB3005Y	Field terminated. Includes a base, 5-pair connector kit with five 5-pair connectors and one 5-pair connector per row of 25 pairs, two label holders, and two white designation labels.

### PAN-PUNCH® Category 5e Rack Mount Kits

P110B100R2Y	Two 100-pair bases premounted to panel.
P110B100R4WJY	Two 100-pair bases with jumper troughs premounted to panel.

### PAN-PUNCH® 110 Category 5e Connecting Blocks

P110CB4-XY	Punchdown Connecting Block.
P110CB4-CY	Punchdown Connecting Block.
P110CB5-XY	Punchdown Connecting Block.
P110CB5-CY	Punchdown Connecting Block.

### PAN-PUNCH® 110 Patch Connectors

P110PC1-XY	Terminates 1-pair, 24 AWG solid or stranded cable.
P110PC2-XY	Terminates 2-pairs, 24 AWG solid or stranded cable.
P110PC4-XY	Terminates 4-pairs, 24 AWG solid or stranded cable.

### PAN-PUNCH® Category 5e 19" Rack Mount Panel Kits

P110B1004R2Y	Two 100-pair bases premounted to panel. 4-pair connector kit included with five 4-pair connectors and one 5-pair connector per row of 25 pairs.
P110B1005R2Y	Two 100-pair bases premounted to panel. 5-pair connector kit included with five 5-pair connectors per row of 25 pairs.
P110B1004R4WJY	Two 100-pair bases and jumper troughs premounted to 19" rack mount panel. 4-pair connector kit included with five 4-pair connectors and one 5-pair connector per row of 25 pairs.
P110B1005R4WJY	Two 100-pair bases and jumper troughs premounted to 19" rack mount panel with 5-pair connector kit included with five 5-pair connectors per row of 25 pairs.

### Jumper Troughs

P110JTW-X	Jumper Trough with legs.
P110JT-X	Jumper Trough.

### 110 Punchdown Designation Label Holder

P110LH	Label holder snaps into 110 and GP6 bases.
--------	--

## Fiber Optic Patch Cords



F9S3-3M\*Y

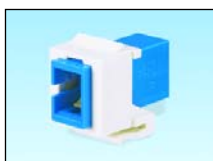


F6D6P-3M\*Y

End Configuration	Multimode		Singlemode
	62.5/125µm	50/125µm	9/125µm
SC to SC Duplex	F6D3-3M*Y	F5D3-3M*Y	F9D3-3M*Y
SC to SC Simplex	F6S3-3M*Y	F5S3-3M*Y	F9S3-3M*Y
SC to Pigtail	F6B3-NM*Y	F5B3-NM*Y	F9B3-NM*Y
SC to LC Duplex	F6E3-10M*Y	F5E3-10M*Y	F9E3-10M*Y
ST to ST Duplex	F6D2-2M*Y	F5D2-2M*Y	F9D2-2M*Y
ST to ST Simplex	F6S2-2M*Y	F5S2-2M*Y	F9S2-2M*Y
ST to Pigtail	F6B2-NM*Y	F5B3-NM*Y	F9B2-NM*Y
ST to SC Duplex	F6D2-3M*Y	F5D2-3M*Y	F9D2-3M*Y
LC to LC Duplex	F6E10-10M*Y	F5E10-10M*Y	F9E10-10M*Y
LC to LC Simplex	F6F10-10M*Y	F5F10-10M*Y	F9F10-10M*Y
LC to Pigtail	F6B10-NM*Y	F5B10-NM*Y	F9B10-NM*Y
FJ® Plug to FJ® Plug Duplex	F6D6P-6PM*Y	F5D6P-6PM*Y	F9D6P-6PM*Y
FJ® Plug to SC Duplex	F6D6P-3M*Y	F5D6P-3M*Y	F9D6P-3M*Y
FJ® Plug to ST Duplex	F6D6P-2M*Y	F5D6P-2M*Y	F9D6P-2M*Y
FJ® Plug to LC Duplex	F6E6P-10M*Y	F5E6P-10M*Y	F9E6P-10M*Y
FJ® Jack Module to Pigtail	F6D6J-NM*Y	F5D6J-NM*Y	F9D6J-NM*Y
FJ® Jack Module to Pigtail	F6B6J-NM*Y	F5B6J-NM*Y	F9B6J-NM*Y

\*Lengths available: Substitute 1, 2, or 3 for 1m, 2m, or 3m lengths.

## NETKEY® Fiber Optic Adapter Modules



NKSCMZ\*\*



NKSTM\*\*



NKDLCMZ\*\*



NKMJM\*\*

Part Number	Description
NKSCMZ**	SC multimode simplex adapter module with phosphor bronze split sleeve.
NKSCMZ**	SC singlemode simplex adapter module with zirconia ceramic split sleeve.
NKSTM**	ST multimode simplex adapter module with phosphor bronze split sleeve.
NKDLCMZ**	LC multimode duplex fiber optic adapter module with phosphor bronze split sleeves.
NKDLCMZ**	LC singlemode duplex fiber optic adapter module with zirconia ceramic split sleeves.
NKMJM**	MT-RJ multimode duplex adapter module.

\*\*For additional colors, substitute \*\* with IW (Off White), EI (Electric Ivory), or WH (White).

## NETKEY® FJ® Fiber Optic Jack Modules and Plugs



NKMOJEI



NKSOJBU



NKMOPEI



NKSOPBUY

Part Number	Description
<b>NETKEY® FJ® OPTI-CRIMP® Jack Modules – Pre-Polished Crimp</b>	
NKMOJOC62EI	FJ® OPTI-CRIMP® Multimode Duplex Keystone Jack Module with phosphor bronze split sleeves – 62.5/125µm.
NKMOJOC50EI	FJ® OPTI-CRIMP® Multimode Duplex Keystone Jack Module with phosphor bronze split sleeves – 50/125µm.
<b>NETKEY® FJ® Duplex Jack Modules – Field Polish</b>	
NKMOJEI	FJ® Multimode Duplex Keystone Jack Module with phosphor bronze split sleeves – 62.5/125µm / 50/125µm.
NKSOJBU	FJ® Singlemode Duplex Keystone Jack Module with zirconia ceramic split sleeves.
<b>NETKEY® FJ® Duplex Plugs – Field Polish</b>	
NKMOPEI	FJ® Multimode Duplex Plug – 62.5/125µm / 50/125µm.
NKSOPBUY	FJ® Singlemode Duplex Plug.

Colors: EI (Electric Ivory) standard color for multimode modules. BU (Blue) standard color for singlemode modules.



## Fiber Optic Connectors



FSCMBL



FSCSBU



FSTMABL



FSTSABU

### SC and ST Connectors – Field Polish

Part Number	Description
-------------	-------------

#### SC Connectors – Field Polish

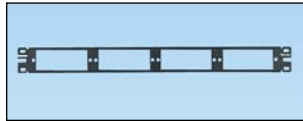
FSCMBL*	SC multimode connector with black boots – 62.5/125µm/50/125µm.
FSCSBU	SC singlemode connector with blue boots.

#### ST Connectors – Field Polish

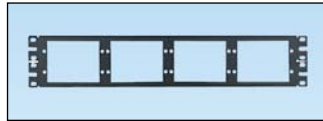
FSTMABL*	ST multimode connector with black boots – 62.5/125µm/50/125µm.
FSTSABU	ST singlemode connector with blue boots.

\*For connectors with red boots, substitute BL (Black) with RD (Red).

## Fiber Adapter Panels



CFAPPBL1



CFAPPBL2



FKP6

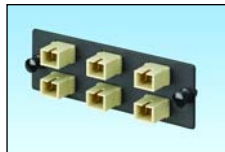
Part Number	Description
-------------	-------------

#### Fiber Adapter Patch Panels

CFAPPBL1	Fiber adapter patch panel – 1 RU.
CFAPPBL2	Fiber adapter patch panel – 2 RU.

#### NETKEY® Module Multimedia Panel – 6-Port

FKP6	NETKEY® Module multimedia panel – 6-port.
------	---



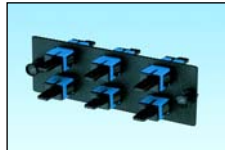
FAP6WEISC



FAP3WEIDSC



FAP6WEIDSC



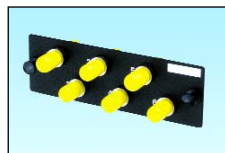
FAP6WBUSCZ



FAP12WBUSCZ



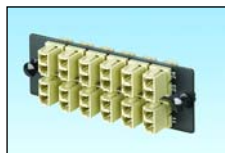
FAP6WST



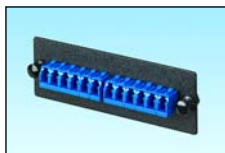
FAP6WSTZ



FAP6WEIDLC



FAP12WEIDLC



FAP12WBULCZ

#### SC Fiber Adapter Panels

FAP6WEISC	SC FAP loaded with six SC simplex multimode fiber optic adapters (Electric Ivory) with phosphor bronze split sleeves.
FAP3WEIDSC	SC FAP loaded with three SC duplex multimode fiber optic adapters (Electric Ivory) with phosphor bronze split sleeves.
FAP6WEIDSC	SC FAP loaded with six SC duplex multimode fiber optic adapters (Electric Ivory) with phosphor bronze split sleeves.
FAP6WBUSCZ	SC FAP loaded with six SC simplex singlemode fiber optic adapters (Blue) with zirconia ceramic split sleeves.
FAP12WBUSCZ	SC FAP loaded with twelve SC simplex singlemode fiber optic adapters (Blue) with zirconia ceramic split sleeves.

#### ST Fiber Adapter Panels

FAP6WST	ST FAP loaded with six ST simplex multimode fiber optic adapters with phosphor bronze split sleeves.
FAP6WSTZ	ST FAP loaded with six ST simplex singlemode fiber optic adapters with phosphor bronze split sleeves.

#### LC Fiber Adapter Panels

FAP6WEIDLC	LC FAP loaded with six LC duplex multimode fiber optic adapters (Electric Ivory) with phosphor bronze split sleeves.
FAP12WEIDLC	LC FAP loaded with twelve LC duplex multimode fiber optic adapters (Electric Ivory) with phosphor bronze split sleeves.
FAP12WBULCZ	LC FAP loaded with six LC simplex singlemode fiber optic adapters (Blue) with zirconia ceramic split sleeves.

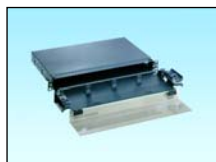
## Fiber Adapter Panels (continued)



FMP6WMTRJ



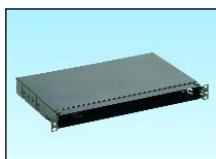
FAPB



FMD1



FMD2



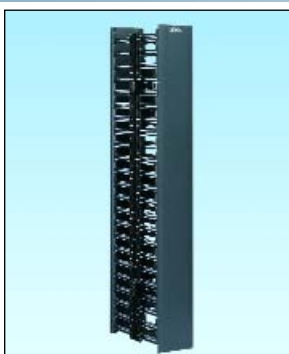
FMT1



FMT2

Part Number	Description
<b>MT-RJ Fiber Adapter Panels</b>	
FMP6WMTRJ	MT-RJ FAP loaded with six MT-RJ duplex multimode fiber optic adapters (Electric Ivory).
FMP6WMTRJBL	MT-RJ FAP loaded with six MT-RJ duplex multimode fiber optic adapters (Black).
<b>Blank Filler Adapter Panels</b>	
FAPB	Blank fiber adapter panel – reserves space for future use.
<b>Fiber Adapter Drawers and Trays</b>	
FMD1	Holds up to four FAP or FMP Adapter Panels.
FMD2	Holds up to eight FAP or FMP Adapter Panels.
FMT1	Mounts with CFAPPBL1 Fiber Adapter Patch Panel to hold up to four QUICKNET™ Cassettes, FAP and FMP Adapter Panels.
FMT2	Mounts with CFAPPBL2 Fiber Adapter Patch Panel to hold up to eight QUICKNET™ Cassettes, FAP and FMP Adapter Panels.

## Cable Management



WMPV45EY



WMP1EY



CMPH2Y



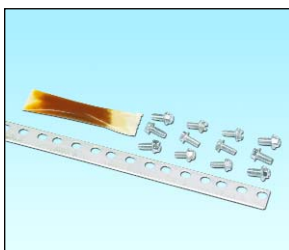
CMR19X84



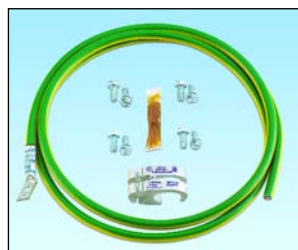
CMPHF1Y



RGW-100-1Y



RGS134-1Y



RGCBNJ660PY

Part Number	Description
<b>NETRUNNER™ Vertical Cable Manager – Dual Hinged Cover</b>	
WMPV45EY	Front and rear manager, 80.4"H x 4.9"W x 11.8"D (2042.2mm x 124.5mm x 299.7mm) – 45 RU. Includes dual hinged covers, wire retainers, and side mount brackets.
<b>PATCHLINK™ Horizontal Cable Manager – Dual Hinged Cover</b>	
WMPSEY	Front and rear manager. Front pathway 1.5"H x 3"D (38.1mm x 76.2mm), Rear pathway 1"H x 5"D (25.4mm x 127mm), 19"W (482.6mm) – 1 RU.
WMP1EY	Front and rear manager. Front pathway 3"H x 3"D (76.2mm x 76.2mm), Rear pathway 2"H x 5"D (50.8mm x 127mm), 19"W (482.6mm) – 2 RU.
<b>OPEN-ACCESS™ Horizontal Cable Manager – Optional Snap-On Cover</b>	
CMPH1	Front and rear manager. Front D-Ring size 1.5"H x 3"D (38.1mm x 76.2mm), Rear D-Ring size 1.5"H x 5"D (38.1mm x 127mm), 19"W (482.6mm) – 1 RU.
CMPH2Y	Front and rear manager. Front D-Ring size 3"H x 3"D (76.2mm x 76.2mm), Rear D-Ring size 3"H x 5"D (76.2mm x 127mm), 19"W (482.6mm) – 2 RU.
CMPHF1Y	Front only manager. Front D-Ring size 1.5"H x 3"D (38.1mm x 76.2mm), 19"W (482.6mm) – 1 RU.
<b>Standard Racks</b>	
CMR19X84	19" EIA rack, aluminum, 84"H x 19"W x 3"D (2133.6mm x 482.6mm x 76.2mm) – 45 RU.
<b>Paint Piercing Grounding Washer Kit</b>	
RGW-100-1Y	100 paint piercing bonding washers for 3/8" (M8) stud size; .875" (22.2mm) O.D.; provided with .16 oz. (5cc) of antioxidant.
<b>Rack Grounding Strip Kit</b>	
RGS134-1Y	Rack grounding strip; 78.65"H x .67"W x .05"D (2m x 17mm x 1.3mm) thickness; provided with .16 oz. (5cc) of antioxidant and three each #12-24 x 1/2", M6 x 12mm, #10-32 x 1/2" and M5 x 12mm thread-forming screws.
<b>Common Bonding Network (CBN) Jumper Kit</b>	
RGCBNJ660PY	#6 AWG (16mm²) jumper; 60" (1.52m) length; 45° bent lug on grounding strip side; provided with .16 oz. (5cc) of antioxidant, two each #12-24 x 1/2", M6 x 12mm, #10-32 x 1/2" and M5 x 12mm thread-forming screws and a copper compression HTAP* for connecting to the CBN in sizes ranging from #2 AWG to 250 kcmil (35 to 120mm²).

\*HTAP also sold separately.

## Labeling and Identification



**PROG-EMCD3**



**PROG-CCCD**



**LS8E**



**LS8E-KIT**



**TDP43MY**



**S100X150YAJ**



**H200X044H1T**



**C200X100YJJ**



**M300X100Y7T**  
**M200X050Y6T**



**PCMB-3**

Part Number	Description
-------------	-------------

### **EASY-MARK™ Labeling Software**

<b>PROG-EMCD3</b>	<i>EASY-MARK™</i> Labeling Software, supplied on CD-ROM. Software simplifies label creation for specific application needs.
-------------------	---

### **CAD-CONNECT™ Labeling Software**

<b>PROG-CCCD</b>	<i>CAD-CONNECT™</i> Labeling Software, including <i>EASY-MARK™</i> Labeling Software, supplied on CD-ROM. Generates labels quickly and easily directly from an electronic CAD file.
------------------	---

### **PANTHER™ LS8E Hand-Held Thermal Transfer Printer and Accessories**

<b>LS8E</b>	Includes LS8E printer, one cassette of S100X150VAC self-laminating labels, six AA alkaline batteries and quick reference card.
-------------	--

<b>LS8E-KIT</b>	Includes LS8E printer, one cassette of S100X150VAC self-laminating labels, six AA alkaline batteries rigid carrying case, LS8-PCKIT, LS8-IB, LS8-WS, operator's manual, and quick reference card.
-----------------	---

### **TDP43MY Thermal Transfer Desktop Printer and Accessories**

<b>TDP43MY</b>	300 dpi printer; includes printer, <i>PANDUIT® EASY-MARK™</i> Labeling Software, RMH48BL hybrid black ribbon, AC power adapter with US and Europlug power cords, manual and quick start card.
----------------	---

### **Self-Laminating Labels**

<b>S100X150YAJ</b>	White print-on area, polyester label for use in Laser or Ink Jet Printer.
<b>S100X150VA1Y</b>	White print-on area, vinyl label for use in TDP43MY Thermal Transfer Printer.
<b>S100X150VAC</b>	White print-on area, vinyl label for use in LS8E Hand-Held Printer.

Labels are available in select colors and in various lengths.

### **Heat Shrink Labels**

<b>H200X044H1T</b>	White, 1/4" diameter polyolefin for use in TDP43MY Thermal Transfer Printer.
<b>H1000X044H1C</b>	White, 1/4" diameter polyolefin for use in LS8E Hand-Held Printer.

Labels are available in white and yellow, as well as various diameter sizes and quantities per roll.

### **Component Labels**

<b>C200X100YJJ</b>	White polyester label for use in Laser or Ink Jet Printer.
<b>C200X100YJT</b>	White polyester label for use in TDP43MY Thermal Transfer Printer.
<b>C200X100YJC</b>	White polyester label for use in LS8E Hand-Held Printer.

Labels are available in various sizes.

### **Marker Plates**

<b>M300X100Y7T</b>	White marker plate for use in TDP43MY Thermal Transfer Printer.
<b>M200X050Y6T</b>	Yellow marker plate for use in TDP43MY Thermal Transfer Printer.

### **Pre-Printed Marker Books**

<b>PCMB-3</b>	Pre-printed vinyl cloth markers in a convenient pocket sized book.
---------------	--

## Labeling and Identification (continued)



T400X000VX1



PMD-0-9



S100X125VARY

### Continuous Tape

<b>T400X000VX1</b>	Yellow vinyl tape for use in TDP43MY Thermal Transfer Printer.
<b>T100X000VXC-BK</b>	Black on Yellow vinyl tape for use in LS8E Hand-Held Printer.

Labels are available in various lengths.

### Pre-Printed Tape Dispenser

<b>PMD-0-9</b>	Flexible polyester marker tape in dispenser allows tape to be cut to exact length.
----------------	--

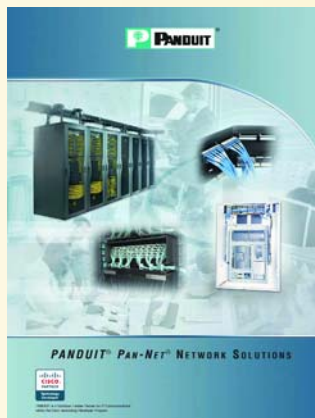
### Self-Laminating Wire Marker Dispenser

<b>S100X125VARY</b>	White, vinyl self-laminating labels provided in handy dispenser with marking pen.
---------------------	---

**PANDUIT** is a global leader in cabling and communications products, delivering end-to-end solutions in support of demanding electrical and networking requirements.

For more information on **PANDUIT** products, catalogs for Network and Electrical Connectivity are available and can be ordered through Customer Service by email at [cs@panduit.com](mailto:cs@panduit.com) or by phone at 800-777-3300.

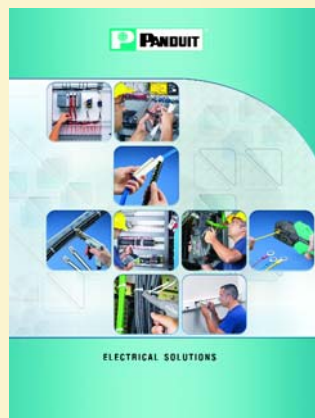
## Network Connectivity



SA-NCCB46

- Cable
- Modules
- Work Area Outlet Solutions
- Surface Raceway
- Zone Cabling
- Patch Panels, Copper Patch Cords and Punchdowns
- Fiber Connectors, Enclosures and Patch Cords
- Fiber Routing Systems
- Racks and Cable Management
- Grounding and Bonding
- Wireless Solutions
- Managed System Solutions
- Industrial
- Labeling and Administration
- Wiring Duct
- Cable Ties and Accessories

## Electrical Connectivity



SA-ELCB03

- Cable Ties
- Cable Accessories
- Stainless Steel
- Wiring Duct
- Surface Raceway
- Abrasion Protection
- Cable Management
- Terminals
- Power and Grounding Connectors
- Labeling System
- Labels
- Pre-Printed and Write-On Markers
- Lockout/Tagout and Safety Solutions

### WORLDWIDE SUBSIDIARIES AND SALES OFFICES

**PANDUIT CANADA**  
Markham, Ontario  
[cs-dn@panduit.com](mailto:cs-dn@panduit.com)  
Phone: 800.777.3300

**PANDUIT EUROPE LTD.**  
London, UK  
[cs-emea@panduit.com](mailto:cs-emea@panduit.com)  
Phone: 44.20.8601.7200

**PANDUIT SINGAPORE PTE. LTD.**  
Republic of Singapore  
[cs-ap@panduit.com](mailto:cs-ap@panduit.com)  
Phone: 65.6379.6700

**PANDUIT JAPAN**  
Tokyo, Japan  
[cs-japan@panduit.com](mailto:cs-japan@panduit.com)  
Phone: 81.3.3767.7011

**PANDUIT LATIN AMERICA**  
Jalisco, Mexico  
[cs-la@panduit.com](mailto:cs-la@panduit.com)  
Phone: 52.333.666.2501

**PANDUIT AUSTRALIA PTY. LTD.**  
Victoria, Australia  
[cs-aus@panduit.com](mailto:cs-aus@panduit.com)  
Phone: 61.3.9794.9020

For a copy of **PANDUIT** product warranties, log on to [www.panduit.com/warranty](http://www.panduit.com/warranty)

For more information

Visit us at [www.panduit.com/nklc08](http://www.panduit.com/nklc08)

Contact Customer Service by email: [cs@panduit.com](mailto:cs@panduit.com)  
or by phone: 800-777-3300 and reference NKLC08

©2007 **PANDUIT** Corp.  
ALL RIGHTS RESERVED.  
Printed in the U.S.A.  
Product Bulletin Number **SA-NKLC08**  
Replaces **SA-NKLC04**  
5/2007

